



5551

# 5551 IGNITRON SIZE B

DATA

**General:**

Peak Voltage Drop . . . . . 12 volts

**Cooling:**

Type . . . . . Water

Minimum Flow . . . . . 1 gallon/minute

Maximum Outlet Water Temperature . . . . . 40°C

Minimum Inlet Water Temperature . . . . . 10°C

Pressure Drop per tube, at Min. Flow . . . . . 1.6 lb./sq.in.

Temp. Rise at Minimum Flow (Average current 40 amp/anode) Approx. . . . . 2°C

Mounting Position . . . . . Vertical, Flexible Lead Up

Max. Rigid Length (Approx.) . . . . . 13-1/2"

Max. Diameter, including Cooling Connections . . . . . 5-3/4"

### AC WELDER-CONTROL SERVICE\*

Ratings are for any voltage from 250 to 600 volts rms at frequencies from 25 to 60 cycles

**Maximum Ratings, Absolute Values:**

DEMAND . . . . .	600 max.	kva
CORRESPONDING AVERAGE ANODE CURRENT. . . . .	30.2 max.	amp
AVERAGE ANODE CURRENT. . . . .	56 max.	amp
CORRESPONDING DEMAND . . . . .	200 max.	kva
TIME OF AVERAGING ANODE CURRENT:		
At 500 volts rms . . . . .	9 max.	sec
At 250 volts rms . . . . .	18 max.	sec
SURGE ANODE CURRENT. . . . .	■ peak	amp
PEAK POSITIVE IGNITOR VOLTAGE §. . . . .	900 max. 200 min.	volts
PEAK NEGATIVE IGNITOR VOLTAGE. . . . .		5 max.
PEAK IGNITOR CURRENT § . . . . .	100 max. 30 min.	amp
AVERAGE IGNITOR CURRENT* . . . . .		1 max.
IGNITION TIME §. . . . .	100 max.	µsec

CURVES FOR THE 5551 IN THIS CLASS OF SERVICE  
ARE SHOWN UNDER TYPE 5550

### INTERMITTENT RECTIFIER SERVICE

For frequencies from 25 to 60 cycles

**Maximum Ratings, Absolute Values:**

PEAK FORWARD ANODE VOLTAGE . . . . .	500 max.	volts
PEAK INVERSE ANODE VOLTAGE . . . . .	500 max.	volts
PEAK ANODE CURRENT . . . . .	700 max.	amp
AVERAGE ANODE CURRENT# . . . . .	40 max.	amp
SURGE ANODE CURRENT for 0.15 sec. max. . . . .	8000 max.	amp

\* , ■ , § , © , #: See next page.

5551



5551

## IGNITRON

PEAK POSITIVE IGNITOR VOLTAGE § . . . . .	{	900 max. volts
		200 min. volts
PEAK NEGATIVE IGNITOR VOLTAGE. . . . .		5 max. volts
PEAK IGNITOR CURRENT § . . . . .	{	100 max. volts
		30 min. volts
AVERAGE IGNITOR CURRENT. . . . .		1 max. amp
IGNITION TIME § . . . . .		100 max. $\mu$ sec

\* Averaged over any 5-second interval.

# Averaged over any 3-second interval.

■ Must be limited to 280% of maximum rms demand current.

● RMS demand-voltage, -current, and -kva are on the basis of full-cycle conduction (no phase delay) regardless of whether or not phase-control is used. Use the 250-volt rating for voltages below 250 volts.

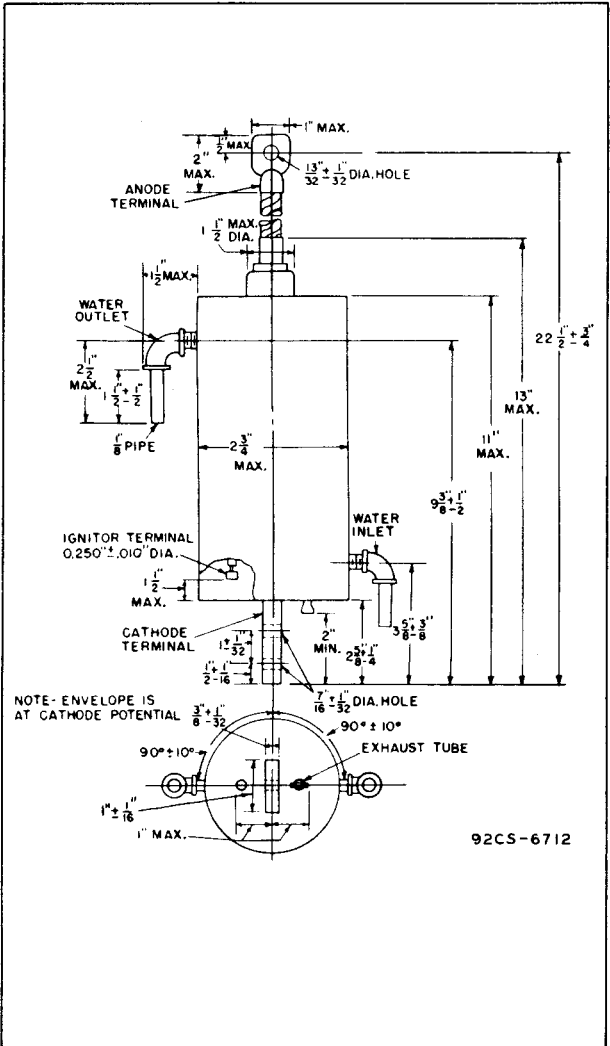
§ Ignition will occur if either minimum peak positive ignitor potential is applied, or minimum peak ignitor current flows, for the rated maximum ignitor ignition time.



5551

# IGNITRON

5551



92CS-6712